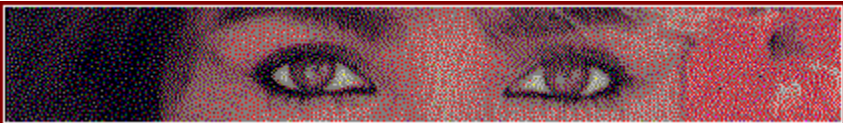


SELECT EXIT FROM THE FILE MENU TO QUIT



## Please Read This Entire Document Before Proceeding

### NEW FEATURES OF GRAPHIC WORKSHOP

If you'd like to see this file again in the future, click on the What's New icon.  
Complete documentation for Graphic Workshop can be found by double clicking on the GWS Documentation icon.

---



Order this software on CD-ROM



You can have your registered copy of this application shipped to you on CD-ROM, rather than on 3½ inch floppy disks, at no extra cost. The CD-ROM also includes shareware evaluation copies of all our other applications, a library of useful Frequently Asked Questions documents, example graphics from our graphic CD-ROM collections, a gallery of web graphics and a library of fifty royalty-free high resolution colour photographs courtesy of IMS Communications.

Just select CD-ROM on the order form installed with this package or tell our operator that you want your software shipped on CD-ROM when you call our order desk.

The availability and contents of the CD-ROM are subject to change without notice -- the lawyers made us say that.

Software CD-ROMs will be available as of April 10, 1997 -- orders placed for software on CD-ROM prior to that will be held until this date.

---



Toll-free registration and ordering is available from Canada, the United States, Britain and Australia. We can accept Visa, MasterCard and American Express. Call 1-800-263-1138 from Canada and the United States. Call 0800-89-7355 from Great Britain. Call 1-800-554-082 from Australia. Please note that our operators are only

**able to handle credit card orders -- they cannot provide you with technical support, customer service or order status. They are unable to transfer your call or take messages. Callers from other countries can reach the order desk at 1-905-936-9500.**

---

**This release of Graphic Workshop for Windows includes the following new features and updates:**

- FIF (fractal image) support.
- More intuitive directory selection.
- Photoshop PSD support.
- Drag 'n drop 'n fluff 'n fold.
- Anti-alias (interpolated) scaling.
- Custom palette option in Effects.
- Casio CAM file support.
- Kodak Digital Camera KDC support.
- Free rotation (rotate an image by any increment).
- A delete feature in View mode to help you weed your image collection.
- A hook for an external viewer in the View mode to view animated GIF files.
- A Zoom option in the slide show.
- Improved TWAIN interface.
- Filters in the View mode -- these include image soften, sharpen, rotate by any angle, colour adjustment, edge detection and more.
- Improved TIFF handling -- it now supports JPEG and PNG compression, as well as multiple-image TIFF (32-bit build only).
- SGI support.
- Interpolated (anti-aliased) scaling.
- Drag 'n drop 'n fluff 'n fold.
- Custom palette option in the Effects function.
- Casio CAM support (read only).

- Kodak KDC support (read only).
- Progressive JPEG support.
- An integral slide show function.
- Optimized line handling code in this release has sped up just about everything Graphic Workshop does.
- New functions in the button bar, including Add Thumbnails, Tag and Untag by wild cards, Up One Directory and Refresh Directory.
- Tiled view option in the View mode.
- Scaling options to maintain the aspect ratio of images being scaled to a fixed frame.
- JPEG comments and details support.
- Conversion to Windows wallpaper — automatically configures your graphic as the current default wallpaper for your desktop.
- XBM support.
- Password protected PNG files — encrypt your graphics so no one can look at them without your permission.
- Faster PNG reading. Please consider converting your GIF files to PNG... it will save you some disk space and help free the high seas of pirates.
- Plus numerous other performance enhancements...

---

We'd like to offer our sincere thanks to everyone who beta-tested the 1.1X builds of Graphic Workshop for Windows and provided us with bug reports. The assistance of users of Graphic Workshop have made this release both more robust and richer in features than it would otherwise have been.

---

**Check out GIF Construction Set, by Alchemy Mindworks. It will create transparent, interlaced and animated GIF files for your web page. It's at our BBS, FTP site, WWW page and on CompuServe -- see GWS Documentation for complete information. As of this writing, registered users of Graphic Workshop for Windows will receive evaluation copies of GIF Construction Set and several other Alchemy Mindworks packages.**

---